



Research

Cite this article: Friedman M, Feilich KL, Beckett HT, Alfaro ME, Faircloth BC, Černý D, Miya M, Near TJ, Harrington RC. 2019 A phylogenomic framework for pelagiarian fishes (Acanthomorpha: Percomorpha) highlights mosaic radiation in the open ocean. *Proc. R. Soc. B* **286**: 20191502. <http://dx.doi.org/10.1098/rspb.2019.1502>

Received: 25 June 2019
Accepted: 14 August 2019

Subject Category:
Evolution

Subject Areas:
taxonomy and systematics, palaeontology, evolution

Keywords:
adaptive radiation, pelagic realm, speciation, UCE, ultraconserved elements

Author for correspondence:
Matt Friedman
e-mail: mfriedm@umich.edu

†Present address: Department of Geophysical Sciences, University of Chicago, Chicago, IL, USA.

Electronic supplementary material is available online at <https://doi.org/10.6084/m9.figshare.c.4643453>.

A phylogenomic framework for pelagiarian fishes (Acanthomorpha: Percomorpha) highlights mosaic radiation in the open ocean

Matt Friedman^{1,2,3}, Kara L. Feilich¹, Hermione T. Beckett³, Michael E. Alfaro⁴, Brant C. Faircloth^{5,6}, David Černý^{4,†}, Masaki Miya⁷, Thomas J. Near^{8,9} and Richard C. Harrington⁸

¹Museum of Paleontology, and ²Department of Earth and Environmental Sciences, University of Michigan, Ann Arbor, MI, USA

³Department of Earth Sciences, University of Oxford, Oxford, UK

⁴Department of Ecology and Evolutionary Biology, University of California at Los Angeles, Los Angeles, CA, USA

⁵Department of Biological Sciences, and ⁶Museum of Natural Science, Louisiana State University, Baton Rouge, LA, USA

⁷Natural History Museum and Institute, Chiba, Aoba-cho, Chuo-ku, Chiba, Japan

⁸Department of Ecology and Evolutionary Biology, and ⁹Peabody Museum, Yale University, New Haven, CT, USA

id MF, 0000-0002-0114-7384; KLF, 0000-0001-6057-897X; HTB, 0000-0003-4475-021X; BCF, 0000-0002-1943-0217; DČ, 0000-0002-3669-5823

The fish clade Pelagiaria, which includes tunas as its most famous members, evolved remarkable morphological and ecological variety in a setting not generally considered conducive to diversification: the open ocean. Relationships within Pelagiaria have proven elusive due to short internodes subtending major lineages suggestive of rapid early divergences. Using a novel sequence dataset of over 1000 ultraconserved DNA elements (UCEs) for 94 of the 286 species of Pelagiaria (more than 70% of genera), we provide a time-calibrated phylogeny for this widely distributed clade. Some inferred relationships have clear precedents (e.g. the monophyly of ‘core’ Stromateoidei, and a clade comprising ‘Gempylidae’ and Trichiuridae), but others are unexpected despite strong support (e.g. Chiasmodontidae + *Tetragonurus*). Relaxed molecular clock analysis using node-based fossil calibrations estimates a latest Cretaceous origin for Pelagiaria, with crown-group families restricted to the Cenozoic. Estimated mean speciation rates decline from the origin of the group in the latest Cretaceous, although credible intervals for root and tip rates are broad and overlap in most cases, and there is higher-than-expected partitioning of body shape diversity (measured as fineness ratio) between clades concentrated during the Palaeocene–Eocene. By contrast, more direct measures of ecology show either no substantial deviation from a null model of diversification (diet) or patterns consistent with evolutionary constraint or high rates of recent change (depth habitat). Collectively, these results indicate a mosaic model of diversification. Pelagiarians show high morphological disparity and modest species richness compared to better-studied fish radiations in contrasting environments. However, this pattern is also apparent in other clades in open-ocean or deep-sea habitats, and suggests that comparative study of such groups might provide a more inclusive model of the evolution of diversity in fishes.

1. Introduction

The open ocean represents one of the largest habitats on Earth. Highly connected and seemingly homogeneous in comparison to environments that are structurally complicated, patchy or readily subdivided, the global pelagic realm appears an unpromising setting for reproductive isolation and subsequent speciation [1–3]. Despite broad ranges and high mobility of larvae and adults [4], there are

conspicuous examples of diversification among open-ocean fishes [5]. Perhaps the most striking is Pelagiaria, a group comprising nearly 300 species placed in 15 taxonomic families [6]. Pelagiaria includes tunas, which are among the most commercially significant, anatomically well-understood and physiologically remarkable of all fishes [7]. Tunas represent only about 5% of pelagiarian species, and are joined by a diversity of less prominent but no less spectacular lineages, including: swallows (Chiasmodontidae), which contain bioluminescent species as well as those that engulf prey larger than themselves [8]; butterfishes and kin (Stromateoidei), which possess remarkable pharyngeal feeding structures and often develop commensal relationships with pelagic invertebrates [9]; scabbardfishes (Trichiuridae), with long, eel-like bodies [10]; the butterfly kingfish (*Gasterochisma*), which evolved endothermy independently of the closely related tunas [11]; and the mysterious ragfish (*Icosteus*), which possesses a weakly mineralized, largely cartilaginous skeleton, and displays contrasting juvenile and adult forms once assigned to separate species [12].

How Pelagiaria diversified in the open ocean remains an outstanding question. Previous studies hypothesized that the group represents an ancient adaptive radiation, catalysed by ecological release arising from the Cretaceous/Palaeogene (K/Pg) extinction [6,13,14]. This interpretation rests on circumstantial evidence: palaeontological and molecular estimates of an early Palaeogene origin; inconsistent support for deep divergences suggestive of rapid diversification among anatomically disparate lineages; and selective extinction of some pelagic fish groups at the K/Pg that could have opened ecological opportunities in open-ocean settings. The dominant model of adaptive radiation posits rapid taxonomic and ecological divergence early in clade history [15], but several obstacles have prevented a direct test of this macroevolutionary hypothesis for Pelagiaria. First, pelagiarian interrelationships are wildly inconsistent between studies (electronic supplementary material, figure S1). Second, the time scale for pelagiarian diversification is unclear, with molecular clock estimates ranging from late Eocene (*ca* 35 Ma) for the clade as a whole [16,17] to Late Cretaceous (*ca* 70 Ma) for more nested radiations [18]. Third, patterns of phenotypic, ecological, and lineage diversification remain unquantified for this group.

We assembled a dataset of ultraconserved DNA elements (UCEs) and their flanking sequences representing over 1000 loci sampled from nearly three quarters of known genera and all families of Pelagiaria except the monotypic Amarsipidae. We married these new genetic resources with other data from modern pelagiarians in order to: (i) infer phylogenetic relationships; (ii) test the hypothesis of early Cenozoic divergence; (iii) quantify patterns of phenotypic, ecological, and lineage diversification to test the previous hypothesis of adaptive radiation [19,20]. More broadly, we seek to establish a mature systematic and evolutionary framework for Pelagiaria that can inform our understanding of diversification in the open ocean and other expansive, spatially continuous habitats, thereby providing a contrast to extensively studied fish systems associated with settings like reefs [21–23].

2. Material and methods

(a) Sequencing protocols

We generated new sequence data for 108 samples, spanning 94 of the 286 species of Pelagiaria (71% of genera) and 14 outgroup

species. We followed laboratory protocols for DNA extraction, genomic library preparation, hybrid-enrichment and sequencing from [24], targeting a set of approximately 1200 UCE loci useful for phylogenetic studies of acanthomorphs [25]. We generated data matrices of 75% (alignment of each locus contains 84 of 112 taxa) and 95% (106 of 112 taxa) completeness for primary phylogenetic analyses. The electronic supplementary material contains additional details of this and other analyses.

(b) Phylogenetic analyses

We adopted three phylogenetic approaches. First, we performed maximum likelihood (ML) and Bayesian phylogenetic inference on partitioned, concatenated alignments for both 95% and 75% complete matrices. Second, we conducted Bayesian concordance analysis (BCA) using BUCKy version 1.4.4 [26,27] in order to evaluate the agreement in phylogenetic signal among individual loci in our dataset. Third, we performed coalescent-based analyses in the program ASTRAL v. 4.4.4 [28] using datasets of loci containing sequences for at least 75% and 95% of our sampled species.

(c) Divergence-time estimation

We incorporated fossil-based age priors for 20 nodes, 14 within Pelagiaria and 6 among outgroups. Prior distributions were empirically informed by the age distribution of additional fossil outgroups as in [24,25]. We used two strategies to estimate divergence times for a fixed topology obtained from the Bayesian and ML analyses of the 75% complete matrix, which both recovered topologically identical trees. First, we performed dating analyses on 10 independent subsets of 25 UCE loci in BEAST v. 1.8 [29]. Second, we used MCMCTree from the PAML package [30] to incorporate larger amounts of sequence data (by-site partitioning: 61 947 bp; locus-partitioning: 76 956 bp or 93 loci) into our divergence-time estimates than is feasible in BEAST. We used lognormal calibration densities for BEAST analyses and uniform densities (with 5% probability mass beyond the soft maximum bound) for MCMCTree analyses (further details in electronic supplementary material). In order to incorporate temporal and topological uncertainty into subsequent comparative analyses, we generated two sets of 100 trees from the posterior distribution of BEAST analyses. Our first set of trees for comparative analyses addresses temporal uncertainty, and was drawn from the post-burnin runs of the fixed-topology BEAST analyses described above. To incorporate uncertainty in timing and relationships, we drew trees from the posterior distribution of a different BEAST analysis that estimated divergence times using 25 randomly selected UCE loci but which did not impose a topological constraint.

(d) Quantifying patterns of lineage diversification

We assessed patterns of diversification dynamics within Pelagiaria using BAMM 2.5.0 [31,32] on each of 100 individual trees from the posterior sample of the topologically unconstrained and constrained BEAST divergence dating analyses described above, with adjustments for incomplete taxonomic coverage using family-specific sampling fractions. For comparison, we also estimated speciation rates for Pelagiaria and additional marine fish clades by using the R package fishtree [33] and by parsing BAMM outputs given in the supplement of Rabosky *et al.* [34]. We report estimates that allow time-varying rate regimes for consistency with our results (λ_{BAMM} of [34]), with the caveat that phylogenies differ (in terms of topology, time scale and sampling fraction) between our study and [34].

(e) Quantifying patterns of morphological and ecological diversification

We examined three sets of morphological and ecological traits: fineness ratio (relative body depth; fork length divided by maximum body depth as measured from published images; $n = 80$), an index of body elongation reflecting the principal axis of body shape variation in many surveys of fish diversity [21] and relevant to locomotor mode and drag reduction [35]; depth ecology compiled from rfishbase [36], measured as \log_{10} of mean (average of reported maxima and minima; $n = 70$) depths; and diet data binned categorically as large, evasive prey (e.g. fishes and squids), gelatinous zooplankton (e.g. jellyfishes, salps), and smaller zooplankton, based on the food item that had the highest score for the metric reported for each species (i.e. per cent frequency occurrence or total wet weight of food item) in the literature ($n = 66$). Fineness ratio and depth were subjected to subclade disparity through time (DTT) analyses [37] using the R package GEIGER [38]. Deviations from the Brownian null were assessed using the rank-envelope test [39], which indicates both the presence of significant deviations and their timing. Positive deviations signal greater within-subclade variation than expected, while negative deviations reflect higher than expected partitioning of variation between subclades [37]. The latter is often interpreted as consistent with models of adaptive radiation [39]. Diet data were examined using the comparative approach applied by Ribeiro *et al.* [40], which detects time intervals characterized by more or fewer shifts in a multistate, discrete trait than expected under a simulated null. We modified this procedure by extending it across multiple trees, recording significant deviations within 1 Myr intervals for each tree.

3. Results

(a) Phylogenetic relationships

Monophyly of Pelagiaria is well supported in both concatenated and coalescent-based analyses (figure 1; electronic supplementary material, figures S1–S4), as is that of all traditional families with the exception of ‘Gempylidae’. Likewise, relationships within families are resolved and strongly supported, and show broad correspondence to past morphological analyses [42–46].

Several lineages classified in monotypic or monogeneric families (*Arripis*, *Icosteus aenigmaticus* and *Pomatomus saltatrix*) behave as rogue taxa (electronic supplementary material, figure S5), showing inconsistent relationships between phylogenies inferred under different approaches. We invariably resolve three large suprafamilial clades: (i) Caristiidae, Bramidae, *Scombrobrax heterolepis* (Scombrobracidae), ‘Gempylidae’ and Trichiuridae; (ii) Scombridae as the sister lineage of a group containing Chiasmodontidae and the species of *Tetragonurus*; and (iii) Stromateidae as sister to a lineage containing species of *Ariomma* and Nomeidae, representing a ‘core’ stromateoid radiation. The relationships of these three major suprafamilial clades to one another, and to Centrolophidae, are inconsistent between analyses.

Some relationships in each of the suprafamilial clades are found in a larger proportion of gene trees than alternative topologies, resulting in relatively high genome-wide concordance factor (CF) estimates (electronic supplementary material, figure S6). The highest sister-lineage CF estimates are for Chiasmodontidae + *Tetragonurus* (CF = 0.495 [95% CI: 0.469–0.521]), ‘Gempylidae’ + Trichiuridae (CF = 0.482 [95% CI: 0.458–0.506]) and *Ariomma* + Nomeidae (CF = 0.445

[95% CI: 0.420–0.472]). *Scombrobrax heterolepis* and Stromateidae each scored high CF estimates for bipartitions with their sister clades (‘Gempylidae’ + Trichiuridae and *Ariomma* + Nomeidae, respectively). The rogue taxa *Arripis*, *Icosteus aenigmaticus*, and *Pomatomus saltatrix* show equivocal results when examined through individual UCE gene trees, and are resolved with numerous candidate sister lineages in nearly equal numbers of gene trees. *Pomatomus saltatrix* exemplifies this pattern, with an equal proportion of loci resolving it in a bipartition with either Scombridae or *Arripis*, while the 95% confidence interval for genome-wide concordance factors for either of these taxa overlap with those of eight other families. Scombridae does not behave like a rogue taxon, but six families, including the three rogue taxa, appear in bipartitions with Scombridae at higher frequencies than either Chiasmodontidae or *Tetragonurus* alone. However, the combined number of loci that support bipartitions of Scombridae with Chiasmodontidae and *Tetragonurus* is higher than the number supporting alternative topologies.

(b) Divergence-time estimates

Divergence time estimates were congruent between topologically constrained analyses, with broadly overlapping 95% credible intervals for most nodes. We refer to dates inferred from an analysis of 25 UCE loci in BEAST unless otherwise noted (figure 1; electronic supplementary material, figure S7), with age estimates from this and MCMCTree analyses provided in electronic supplementary material (electronic supplementary material, table S1 and figure S8). We estimate the age of crown Pelagiaria as 72.76 Ma, or latest Campanian, and plausible times of origin span nearly the entire Campanian–Maastrichtian interval of the Late Cretaceous (95% HPD: 66.39–81.65 Ma). MCMCTree analyses yield younger age estimates for the pelagiarian root (67.72–66.44 Ma) and narrower credible intervals for this and other nodes; the analysis with by-site partitioning cannot exclude the possibility that the crown originated after the K/Pg. Short internodes characterize the deepest divergences within Pelagiaria, and well-supported sub-clades originate around or shortly after the K/Pg boundary: Stromateidae + *Ariomma* + Nomeidae (‘core’ stromateoids), *Tetragonurus* + Chiasmodontidae, Scombridae, Bramidae + Caristiidae, *Scombrobrax heterolepis* + ‘Gempylidae’ + Trichiuridae. Origins for crown Stromateidae, Chiasmodontidae, Bramidae, ‘Gempylidae’ and Trichiuridae fall within the Eocene. Crown groups for all other adequately sampled, non-monotypic families are Miocene in age. The rogue taxa *Pomatomus saltatrix*, *Icosteus aenigmaticus*, and *Arripis* branch deeply within pelagiarian phylogeny, implying tens of millions of years of independent evolutionary history for each.

(c) Patterns of lineage diversification

BAMM analyses find little support for diversification dynamics of subclades that differ significantly from that of the entire radiation, with the credible set inferred for a majority of topologically unconstrained and constrained trees comprising a single rate regime (88 and 100%, respectively; electronic supplementary material, figure S9). Estimated mean rates at the roots of individual trees are higher than those for their tips, but there is substantial variation in mean rates and the degree of decrease across trees (figure 2a; electronic supplementary material, figures S9–S11). The mean of mean rates for the

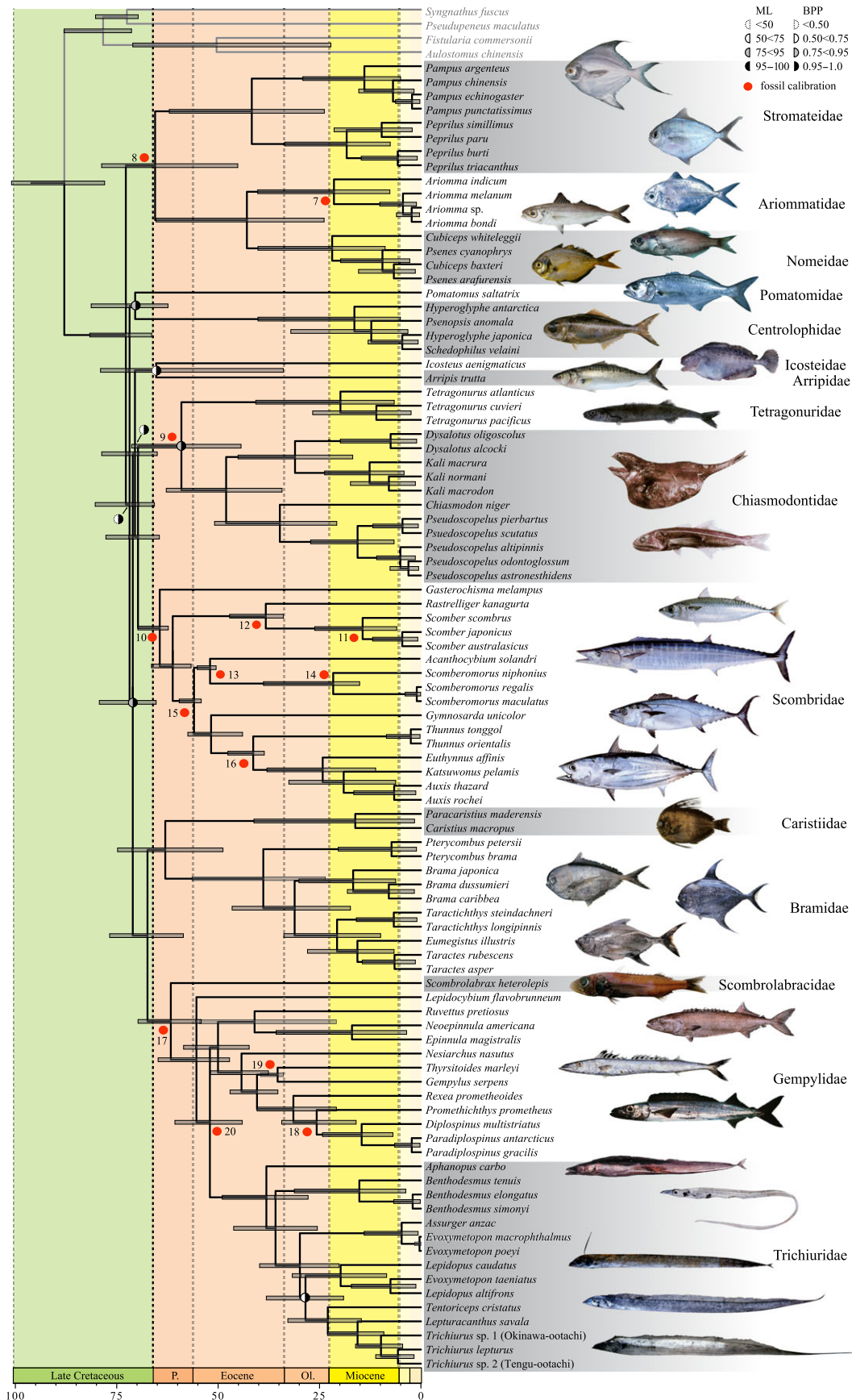


Figure 1. Time-calibrated phylogeny of Pelagia based on topology inferred from 75% complete data matrix (1007 UCE loci). Statistical support values for nodes are indicated by monochrome shaded discs. Maximum likelihood bootstrap (ML) and Bayesian posterior probability (BPP) support are indicated by the left and right halves of the discs, respectively. Nodes without discs received support of 100% ML and 1.0 BPP. Red discs indicate the placement of fossil calibrations, with numerals corresponding to calibration numbers given in electronic supplementary material. *Pampus argenteus*, *Ariomma indicum*, *Ruvettus pretiosus*, *Promethichthys prometheus*: J. E. Randall (CC BY-NC); *Peprilus burti*: © R. Robertson (with permission); *Ariomma bondi*: © J. Kolding (with permission); *Cubiceps whiteleggii*: H. B. Osmany (CC BY-NC); *Pomatomus saltatrix*: NOAA; *Icosteus aenigmaticus*: J. P. Williams (CC BY-NC); *Arripis trutta*: Australian National Fish Collection/CISRO (CC BY-NC); *Aphanopus carbo*: © Pedro Niny Duarte/Universitário dos Açores (with permission). All other images from [41] (pls 144 B,G,E; 145 B; 217 D-E; 219 D-E; 220 F-G; 221 E; 223 E; 224 B,D,F-G; 233 A, G-E), © Tokai University Press, used with permission. See electronic supplementary material table S2 for further details.

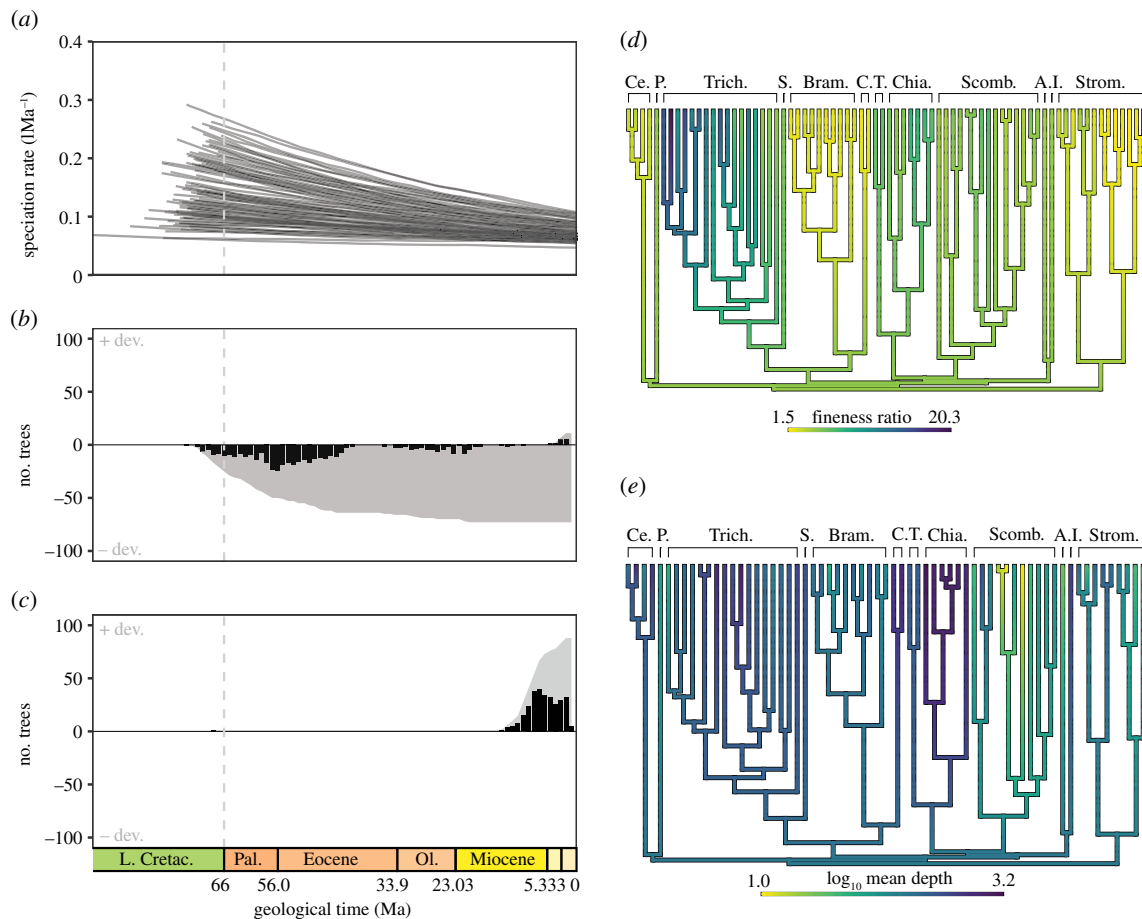


Figure 2. Patterns of evolutionary diversification in Pelagiaria. (a) BMM-estimated mean speciation rates for 100 time-scaled phylogenies drawn from the posterior distribution of a topologically constrained BEAST divergence dating analysis ($n = 100$). Dashed vertical line indicates the K/Pg boundary. (b) Proportion of trees showing significant deviations from a subclade disparity through time (DTT) trajectory based on a constant rate Brownian motion null model for fitness ratio. Bar height at a given timestep indicates number of trees showing significant positive (above horizontal line) or negative (below horizontal line) deviations from the null. Grey envelope represents an accumulation curve, indicating the total number of trees showing at least one interval of significant deviation before that time. (c) Proportion of trees showing significant deviations from a subclade disparity through time (DTT) trajectory based on a constant rate Brownian motion null model for \log_{10} (mean depth). (d) Contour mapped [47] consensus of trees used in (a–c) showing evolution of fitness ratio. (e) Contour mapped consensus of trees used in (a–c) showing evolution of depth ecology. Differences between trees in (d) and (e) reflect differing availability of data for fitness ratio and depth ecology. Abbreviations: A., Arripidae; Bram., Bramidae; C., Caristiidae; Ce., Centrolophidae; Chia., Chiasmodontidae; L., Icosteidae; P., Pomatomidae; S., Scombrobracidae; Scomb., Scombridae; Strom., ‘core’ Stromateoidei (Ariommatidae + Nomeidae + Stromateidae); T., Tetragonuridae; Trich.: Trichiuroidei (‘Gempylidae’ + Trichiuridae).

constrained and unconstrained tree sets, respectively, are 0.149 IMyr^{-1} (range of means = $0.0634\text{--}0.292 \text{ IMyr}^{-1}$) and 0.184 IMyr^{-1} ($0.0769\text{--}0.351 \text{ IMyr}^{-1}$) at the base of the tree, 0.0732 IMyr^{-1} ($0.0469\text{--}0.108 \text{ IMyr}^{-1}$) and 0.0942 IMyr^{-1} ($0.0568\text{--}0.147 \text{ IMyr}^{-1}$) at the tips, and 0.0963 ($0.0537\text{--}0.155 \text{ IMyr}^{-1}$) and 0.122 IMyr^{-1} ($0.0668\text{--}0.203 \text{ IMyr}^{-1}$) overall. Credible intervals about the mean values of root and tip rates are broad, and these overlap for nearly all trees (unconstrained: 98/100; constrained: 97/100; electronic supplementary material, figure S11).

(d) Patterns of morphological and ecological diversification

We reject constant-rate, diffusive change in fitness ratio in Pelagiaria. Rank-envelope tests show significant negative excursions overwhelmingly placed in the early phases of pelagiarian diversification for the samples of topologically unconstrained and constrained trees (figure 2b; electronic supplementary material, figure S10b). Half of all trees show at least one negative deviation at or before the earliest Eocene (i.e.

where the height of the accumulation curve is 50 trees; constrained: 56 Ma; unconstrained: 59 Ma), and a majority of trees show negative deviations before the end of the epoch (constrained: 66%; unconstrained: 95%). This implies the concentration of differentiation in gross body form early in pelagiarian phylogeny, but mostly occurring after the K/Pg. Positive deviations are recorded for a minority of trees near the Recent for both tree samples (figure 2b; electronic supplementary material, figure S10b). By contrast, depth ecology does not show negative excursions from a Brownian null early in pelagiarian history, but a majority of trees (constrained: 88%; unconstrained: 92%) show significant positive excursions from Brownian expectations in the Neogene (figure 2c; electronic supplementary material, figure S10c). Unlike body shape and depth ecology, there is no strong indication that evolution of diet deviates significantly from null expectations; only a few trees show more changes than expected during the Neogene (electronic supplementary material, figure S12a,c). We infer a probable diet of evasive prey for the last common ancestor of pelagiarians (electronic supplementary material, figure S12b,d).

4. Discussion and conclusion

(a) Agreement and disagreement with past phylogenetic hypotheses

Our analysis supports many patterns of relationships inferred from morphology, including the monophyly of all pelagiarian families excluding ‘Gempylidae’ (see also [48]), and details of intrafamilial relationships. The latter is apparent for Trichiuridae [44], Chiasmodontidae [46] and especially Scombridae, where UCE data agree with the established tribal classification [45,49] more closely than previous molecular studies [6,16,18,50]. Our results confirm nesting of Trichiuridae within ‘gempylids’ [43,44,48,51,52], and the sister-group relationship between Caristiidae and Bramidae mirrors anecdotal associations [53,54].

Our results do not support two motifs of morphological classifications: Scombroidei, a clade comprising Scombridae and Trichiuroidei to the exclusion of other groups [55]; and Stromateoidei, encompassing Centrolphidae, Nomeidae, Stromateidae, and the species of *Ariomma* and *Tetragonurus* [9]. *Scombrlabrax heterolepis* is the sister lineage of trichiuroids to the exclusion of scombrids, consistent with pre-cladistic interpretations [56,57]. This, along with resolution of *Gasterochisma melampus* as the earliest diverging scombrid, indicates characters used to unite Scombridae and Trichiuroidei [48] are homoplastic. As in previous molecular analyses [6,16,50,58], our phylogeny does not resolve Stromateoidei as a clade. Particularly striking is the well-supported sister-group relationship between the putative stromateoid *Tetragonurus* and chiasmodontids. Although they share superficial similarities like dark coloration and mesopelagic ecology, these lineages display marked differences, particularly with respect to feeding. *Tetragonurus* possesses greatly enlarged posterior pharyngeal bones (comprising fused third and fourth pharyngobranchials) that extend into papillae-lined pharyngeal sacs classically regarded as a stromateoid synapomorphy, coupled with short, box-like jaws bearing slicing dentary teeth [9]. These features appear to relate to a near-exclusive diet of gelatinous zooplankton [9]. By contrast, chiasmodontids have large jaws bearing long teeth combined with a distensible stomach and body walls, permitting ingestion of large fishes whole and inspiring the group’s common name of swallowers.

(b) The time scale of pelagiarian evolution

Our time-calibrated phylogeny indicates the emergence of several distinctive crown pelagiarian lineages near the K/Pg boundary, with these groups first known from body fossils around or just before the Palaeocene–Eocene boundary [59,60]. Quantitative biostratigraphic models reject or cast considerable doubt on Cretaceous origins for some pelagiarian sub-clades [6], although we estimate a latest Cretaceous age for the clade as a whole (cf. [25,34]). This consilience stands in contrast to previous studies delivering much younger [16,61] or older [18] estimates that might reflect inadequate or inaccurate calibration schemes. Short stem lineages associated with the crown radiations of scombrids, trichiuroids, and core stromateoids suggest that their distinctive morphologies arose in as little as 5–7 Myr. Similar circumstances surround the origin of other distinctive percomorph morphologies [24,40] in terms of the duration over which these new body shapes evolved as well as their absolute timing.

The appearance of scombrids, trichiuroids and other distantly related predatory percomorphs in the early Palaeogene has been interpreted as a response to the extinction of major Mesozoic groups of predatory marine teleosts [13,14,62]. The parallel origin of these lineages is one of the more promising possible examples of ecological release associated with the radiation of percomorphs at this time [25]. By contrast, potential drivers of diversification of other pelagiarian groups are less obvious, although open-ocean ecosystems underwent apparent collapse [63] and subsequent restructuring [64–66] associated with the K/Pg. These suggest a broad range of ecological opportunities of the kind thought to be critical in triggering divergence [15]. For example, a hypothesized proliferation of jellyfishes in the early Palaeogene [63] could have provided the substrate for diversification of pelagiarian clades that directly feed upon [9] or are otherwise associated with gelatinous zooplankton [67].

(c) Mosaic diversification in Pelagiaria

Our comparative analyses provide insights on two critical questions. First, they indicate the degree to which Pelagiaria follows patterns predicted for adaptive radiations [15], as well as the more specific hypothesis of diversification triggered by extinction-mediated ecological release [6]. Second, and more generally, they provide insight into the origin of diversity in expansive habitats that seem unlikely settings for evolutionary radiations [1].

The range of mean tip rates for Pelagiaria (0.0469–0.147 IMyr^{-1}) spans that recovered by Rabosky *et al.* [34] (0.0761 IMyr^{-1}), but is lower than tip rates across actinopterygians as a whole (0.164 IMyr^{-1} [34]). The range of mean overall pelagiarian speciation rates (0.0537–0.203 IMyr^{-1}) encompasses both past estimates for the clade (0.0577 [34]) as well as those over the history of actinopterygians (0.141 IMyr^{-1} [68]; 0.0904 IMyr^{-1} [34]). Faster speciation rates at the root of pelagiarian phylogeny than at the tips could be interpreted as a consequence of a diversity-dependent slowdown under a niche-filling model of adaptive radiation [69], but this peak in speciation predates hypothesized ecological opportunity in the early Palaeocene and the major divergences in overall body form centred in the Palaeocene–Eocene (figure 2b; electronic supplementary material, figure S10b). Planktonic foraminifera do show a pronounced rise in richness during the Maastrichtian [70] thought to stem from ocean stratification conducive to diversification [71]. No corresponding increase in origination of pelagic fish tooth morphotypes occurs at this time [66], implying that if diversification did occur during this interval, it might have been morphologically cryptic. However, broadly overlapping credible intervals for tip and root rates, along with past estimates of more constant speciation rates in the group over much of the Cenozoic [34], suggest a cautious approach to interpreting temporal variation in pelagiarian speciation.

Patterns of phenotypic and ecological evolution only partially conform to theoretical expectations for adaptive radiations [15]. The early history of Pelagiaria is characterized by substantial partitioning of body-form diversity between rather than within lineages, manifest in the establishment of morphologically distinctive clades. These deviations are overwhelmingly placed in the early Palaeogene, making them consistent with morphological diversification mediated by the K/Pg and observations from the fossil record [14,66].

Patterns recovered for ecological attributes differ. In the case of depth, significant deviations from the null are positive and concentrated in the Neogene, long after either the origin of the clade or the K/Pg. This could reflect either an Ornstein–Uhlenbeck or accelerating model of evolution for depth ecology for this recent interval [39]. The timing of changes in dietary preference lack consistent deviations from a null model, indicating constant transitions over clade history.

The absence of unanimous support for an ‘early burst’ model of evolution across these attributes reflects a more general pattern in comparative studies, which yield similarly ambiguous evidence even for clades considered textbook examples of adaptive radiation [72]. In response, some have advocated a return to a more classic model of adaptive radiation [73] that focuses on the origin of major dietary or locomotor adaptations associated with higher taxa rather than species [19]. Others have argued that an emphasis on ‘early burst’ dynamics obscures understanding of the more nuanced nature of evolutionary diversification [23]. We find evidence of mosaic radiation in Pelagiaria: potentially declining rates of speciation from the time of the clade’s origin followed later by establishment and subsequent stasis of gross body forms and presumed locomotor mode [35], but substantial lability in aspects of depth ecology and diet throughout the history of the group. Pelagiaria therefore combines some features of ‘early burst’-style radiation in terms of gross phenotype [40] with more sustained change in ecological traits [23]. Both our time-calibrated tree and the fossil record suggest that many distinctive morphological features associated with feeding in specific lineages (e.g. non-protrusible jaws in trichiurids and scombrids; enlarged fangs in trichiurids and scombrilabrids; pharyngeal sacs and papillae in ‘stromateoids’ [9,48]) appeared early in pelagiarian history [60,74], with little subsequent modification even as diets within clades have varied. This finds a parallel in labrids, which show declining rates for the origin of major anatomical feeding innovations, but constant—or potentially accelerating—rates of dietary transition over time [23]. These shared patterns of trophic flexibility in the face of anatomical specialization are evocative of Liem’s paradox [75] on a macroevolutionary scale.

(d) Radiation in the open ocean

Diversification of Pelagiaria in what at first might appear to be the homogeneous environment of the open ocean evokes classic debates on how diversity can arise and persist in uniform settings [3]. But as in well-studied radiations, pelagiarians have clearly diverged along a combination of trophic and spatial axes. Dietary specializations of the group range from plankton [76] to gelatinous zooplankton [9] to pelagic arthropods, cephalopods, and fishes [9,76,77]. Pelagiarians have also partitioned the open ocean along a series of spatial or habitat axes, including depth gradients and intimate associations with pelagic invertebrates including salps, medusae and siphonophores [67,78–80].

Pelagiarians show potentially informative differences with well-studied fish radiations in terms of relative levels of morphological diversity and species richness. Labrids [23], South American cichlids [81] and cichlid radiations in both Lake Victoria and Lake Malawi [82] all outnumber pelagiarian species richness by more than a factor of two, but these other radiations are arguably more conservative in terms of body-shape diversity than pelagiarians. As a crude comparison,

each of these species-rich examples comprises only a single family or subfamily in contrast to the at least 15 anatomically disparate families of Pelagiaria. Of these other groups, labrids make the most useful comparison with pelagiarians: both are marine, broadly distributed, and originate during the interval surrounding the K/Pg [23]. However, labrids principally diversified in association with reefs [22], which would seem to represent a first-order factor underlying macroevolutionary contrasts with pelagiarians. Both groups have pelagic larvae, but most pelagiarians have extensive dispersal capabilities at all stages of life history that should further oppose evolutionary differentiation by maintaining gene flow over broad spatial scales [2]. Indeed, many pelagiarian species have wide geographical distributions [4], with some consisting of a single, global population with no obvious geographical structure [83]. High variation in estimated speciation rate across individual trees in our analyses complicates comparison with other lineages, and is compounded by potentially misleading comparisons of mean rates from analyses restricted to focal clades (as of Pelagiaria here) to those where rate estimates for the focal clade are informed by data for other lineages [84]. A recent analysis of diversification dynamics across fishes [34] considers these contrasting groups within a common phylogenetic and analytical framework, and finds mean overall speciation rates for pelagiarians (0.0569 Myr^{-1}) are lower than those of labrids (0.0789 Myr^{-1}) and other iconic reef fish lineages (e.g. Acanthuridae: 0.0900 Myr^{-1} ; Chaetodontidae: 0.116 Myr^{-1} ; Pomacentridae: 0.102 Myr^{-1}). None of these reef fish groups shows an early peak in speciation rate, but instead show an increase in rate commencing in the Neogene and continuing to the present day [34].

Pelagiarians display a remarkable range of morphologies given their modest species richness; scombrids alone nearly equal the body-shape disparity of labrids, which comprise an order of magnitude more species [22]. This pattern is not unique to pelagiarians, and many radiations associated with pelagic or deep-sea settings show a combination of high morphological disparity and low taxonomic richness (Lampridiformes [85] and Stephanobercyiformes [86] represent extreme examples). Some high-richness, low-disparity fish clades in the deep sea (e.g. Myctophidae) have species-specific bioluminescence hypothesized to facilitate speciation [87], and might therefore represent exceptions to a general rule. These patterns, and the contrasts they might make with the better-documented macroevolutionary histories of fishes in other environmental settings like reefs [22,23,88], are little studied but could help provide a more inclusive comparative perspective on the evolution of diversity in fishes.

Data accessibility. UCE raw read data are archived in the NCBI Sequence Read Archive (SRA) under BioProject number PRJNA561597. Data and scripts for 75% complete BEAST analyses, MCMCTree analyses and all comparative analyses are archived in Dryad Digital Repository (doi:10.5061/dryad.sq067ng).

Authors’ contributions. M.F. and R.C.H. designed the project. R.C.H. and B.C.F. generated UCE sequences and R.C.H. conducted phylogenetic analyses, with contributions from D.Č. Molecular laboratory work and sequencing was conducted in laboratory facilities overseen by B.C.F. and T.J.N. K.L.F., H.T.B., R.C.H. and M.F. gathered trait data and conducted comparative analyses. M.M. contributed tissue samples. M.F. and R.C.H. designed and wrote the manuscript. All authors read, made suggestions about and approved the final version of the manuscript.

Competing interests. We declare we have no competing interests.

Funding. This work was supported by NERC (DTP Environmental Research NE/L0021612/1 to H.T.B.), NSF (Postdoctoral Research in Biology grant no. 1811891 to K.L.F.), MEXT/JSPS KAKENHI (grant nos 22370035 and 26291083 to M.M.) and Louisiana State University (start-up funds to B.C.F.).

Acknowledgements. J. Maclaine (Natural History Museum, London) provided access to recent comparative material. A. Bentley (University of Kansas) provided tissue samples. An earlier version of this contribution was substantially improved by comments from the editorial staff, Peter Wainwright and an anonymous reviewer.

References

- Norris RD. 2000 Pelagic species diversity, biogeography, and evolution. *Paleobiology* **26**, 236–258. (doi:10.1017/S0094837300026956)
- Coyne J, Orr HA. 2004 *Speciation*. Sunderland, MA: Sinauer Associates.
- Hutchinson GE. 1961 The paradox of the plankton. *Am. Nat.* **95**, 137–145. (doi:10.1086/282171)
- Gaither MR, Bowen BW, Rocha LA, Briggs JC. 2016 Fishes that rule the world: circumtropical distributions revisited. *Fish Fish.* **17**, 664–679. (doi:10.1111/faf.12136)
- Miya M, Nishida M. 1997 Speciation in the open ocean. *Nature* **389**, 803–804. (doi:10.1038/39774)
- Miya M *et al.* 2013 Evolutionary origin of the Scombridae (tunas and mackerels): members of a Palaeogene adaptive radiation with 14 other pelagic fish families. *PLoS ONE* **8**, e73535. (doi:10.1371/journal.pone.0073535)
- Wainwright PC, Longo SJ. 2017 Functional innovations and the conquest of the oceans by acanthomorph fishes. *Curr. Biol.* **27**, R550–R557. (doi:10.1016/j.cub.2017.03.044)
- Melo MRS. 2010 A revision of the genus *Pseudoscopelus* Lütken (Chiasmodontidae: Acanthomorpha) with descriptions of three new species. *Zootaxa* **2710**, 1–78. (doi:10.11646/zootaxa.2710.1.1)
- Haedrich RL. 1967 The stromateoid fishes: systematics and a classification. *Bull. Mus. Comp. Zool.* **135**, 31–139.
- Nakamura I, Parin NN. 1993 *FAO Species Catalog Vol. 15. Snake Mackerels and Cutlassfishes of the World (Families Gempylidae and Trichiuridae)*. Rome, Italy: Food and Agriculture Organization of the United Nations.
- Block BA, Finnerty JR, Stewart AFR, Kidd J. 1993 Evolution of endothermy in fish: mapping physiological traits on a molecular phylogeny. *Science* **260**, 210–214. (doi:10.1126/science.8469974)
- Komori K. 1993 *Osteological development of ragfish (Icosteus aenigmaticus Lockington)*. Arcata, CA: Humboldt State University.
- Friedman M. 2009 Ecomorphological selectivity among marine teleost fishes during the end-Cretaceous extinction. *Proc. Natl Acad. Sci. USA* **106**, 5218–5223. (doi:10.1073/pnas.0808468106)
- Friedman M. 2010 Explosive morphological diversification of spiny-finned teleost fishes in the aftermath of the end-Cretaceous extinction. *Proc. R. Soc. B* **277**, 1675–1683. (doi:10.1098/rspb.2009.2177)
- Schluter D. 2000 *The ecology of adaptive radiation*. Oxford, UK: Oxford University Press.
- Near TJ *et al.* 2013 Phylogeny and tempo of diversification in the superradiation of spiny-rayed fishes. *Proc. Natl Acad. Sci. USA* **110**, 12 738–12 743. (doi:10.1073/pnas.1304661110)
- Hughes L *et al.* 2018 Comprehensive phylogeny of ray-finned fishes (Actinopterygii) based on transcriptomic and genomic data. *Proc. Natl Acad. Sci. USA* **115**, 6249–6254. (doi:10.1073/pnas.1719358115)
- Santini F, Carnevale G, Sorenson L. 2013 First molecular scombrid timetree (Percomorpha: Scombridae) shows recent radiation of tunas following invasion of pelagic habitat. *Ital. J. Zool.* **80**, 210–221. (doi:10.1080/11250003.2013.775366)
- Slater GJ, Frisca AR. 2019 Hierarchy in adaptive radiation: a case study using the Carnivora (Mammalia). *Evolution* **73**, 524–539. (doi:10.1111/evo.13689)
- Hopkins MJ, Lidgard S. 2012 Evolutionary mode routinely varies among morphological traits within fossil species lineages. *Proc. Natl Acad. Sci. USA* **109**, 20 520–20 525. (doi:10.1073/pnas.1209901109)
- Claverie T, Wainwright PC. 2014 A morphospace for reef fishes: elongation is the dominant axis of body shape evolution. *PLoS ONE* **9**, e112732. (doi:10.1371/journal.pone.0112732)
- Price SA, Claverie T, Near TJ, Wainwright PC. 2015 Phylogenetic insights into the history and diversification of fishes on reefs. *Coral Reefs* **34**, 997–1009. (doi:10.1007/s00338-015-1326-7)
- Burress ED, Wainwright PC. 2019 Adaptive radiation in labrid fishes: a central role for function innovations during 65 My of relentless diversification. *Evolution* **73**, 346–359. (doi:10.1111/evo.13670)
- Harrington RC, Faircloth BC, Eytan RI, Smith WL, Near TJ, Alfaro ME, Friedman M. 2016 Phylogenomic analysis of carangimorph fishes reveals flatfish asymmetry arose in a blink of the evolutionary eye. *BMC Evol. Biol.* **16**, 224. (doi:10.1186/s12862-016-0786-x)
- Alfaro ME, Faircloth BC, Harrington RC, Sorenson L, Friedman M, Thacker CE, Oliveros CH, Černý D, Near TJ. 2018 Explosive diversification of marine fishes at the Cretaceous-Palaeogene boundary. *Nat. Ecol. Evol.* **2**, 688–696. (doi:10.1038/s41559-018-0494-6)
- Ane C, Larget B, Baum DA, Smith SD, Rokas A. 2007 Bayesian estimation of concordance among gene trees. *Mol. Biol. Evol.* **24**, 412–426. (doi:10.1093/molbev/msl170)
- Larget BR, Kotha SK, Dewey CN, Ane C. 2010 BUCKY: gene tree/species tree reconciliation with Bayesian concordance analysis. *Bioinformatics* **26**, 2910–2911. (doi:10.1093/bioinformatics/btq539)
- Mirarab S, Reaz R, Bayzid MS, Zimmerman T, Swenson MS, Warnow T. 2014 ASTRAL: genome-scale coalescent-based species tree estimation. *Bioinformatics* **30**, i541–i548. (doi:10.1093/bioinformatics/btu462)
- Drummond AJ, Suchard MA, Xie D, Rambaut A. 2012 Bayesian phylogenetics with BEAUti and the BEAST 1.7. *Mol. Biol. Evol.* **29**, 1969–1973. (doi:10.1093/molbev/mss075)
- Yang Z. 2007 PAML 4: phylogenetic analysis by maximum likelihood. *Mol. Biol. Evol.* **24**, 1586–1591. (doi:10.1093/molbev/msm088)
- Shi J, Rabosky DL. 2015 Speciation dynamics during the global radiation of extant bats. *Evolution* **69**, 1528–1545. (doi:10.1111/evo.12681)
- Rabosky DL. 2014 Automatic detection of key innovations, rate shifts, and diversity-dependence on phylogenetic trees. *PLoS ONE* **9**, e89543. (doi:10.1371/journal.pone.0089543)
- Chang J, Rabosky DL, Smith SA, Alfaro ME. 2018 An R package and online resource for macroevolutionary studies using the ray-finned fish tree of life. *Methods Ecol. Evol.* **10**, 1118–1124. (doi:10.1111/2041-210X.13182)
- Rabosky DL *et al.* 2018 An inverse latitudinal gradient in speciation rate for marine fishes. *Nature* **559**, 392–395. (doi:10.1038/s41586-018-0273-1)
- Weihls D, Webb PW. 1983 Optimization of locomotion. In *Fish biomechanics* (eds PW Webb, D Weihls), pp. 339–371. New York, NY: Prager.
- Boettiger C, Lang DT, Wainwright PC. 2012 rfishbase: exploring, manipulating, and visualizing FishBase data from R. *J. Fish Biol.* **81**, 2030–2039. (doi:10.1111/j.1095-8649.2012.03464.x)
- Harmon LJ, Schulte II JA, Larson A, Losos JB. 2003 Tempo and mode of evolutionary radiation in iguanian lizards. *Science* **301**, 961–964. (doi:10.1126/science.1084786)
- Pennell MW, Eastman JM, Slater GJ, Brown JW, Uyeda JC, FitzJohn RG, Alfaro ME, Harmon LJ. 2014 geiger v2.0: an expanded suite of methods for fitting macroevolutionary models to phylogenetic trees. *Bioinformatics* **30**, 2216–2218. (doi:10.1093/bioinformatics/btu181)
- Murrell DJ. 2018 A global envelope test to detect non-random bursts of trait evolution. *Methods Ecol. Evol.* **9**, 1739–1748. (doi:10.1111/2041-210X.13006)
- Ribeiro E, Davis AM, Rivero-Vega RA, Ortí G, Betancur-R R. 2018 Post-Cretaceous bursts of evolution along the benthic–pelagic axis in marine fishes. *Proc. R. Soc. B* **285**, 20182010. (doi:10.1098/rspb.2018.2010)
- Masuda H, Amaoka K, Araga C, Uyeno T, Yoshino T. 1984 *The fishes of the Japanese Archipelago*. Tokyo, Japan: Tokai University Press.
- Doiuchi R, Sato T, Nakabo T. 2004 Phylogenetic relationships of the stromateoid fishes (Perciformes). *Ichthyol. Res.* **51**, 202–212. (doi:10.1007/s10228-004-0216-8)

43. Gago FJ. 1997 Character evolution and phylogeny of the cutlassfishes: an ontogenetic perspective (Scombroidei: Trichiuridae). *Bull. Mar. Sci.* **60**, 161–191.
44. Gago FJ. 1998 Osteology and phylogeny of the cutlassfishes (Scombroidei: Trichiuridae). *Contrib. Sci. (Los Angel. Calif.)* **476**, 1–79.
45. Collette BB, Reeb C, Block BA. 2001 Systematics of the tunas and mackerels. In *Fish physiology* (eds BA Block, E Stevens), pp. 1–33. San Diego, CA: Academic Press.
46. Melo MRS. 2009 *Taxonomic and phylogenetic revision of the family Chiasmodontidae (Perciformes: Acanthomorpha)*. Auburn, AL: Auburn University.
47. Revell LJ. 2012 phytools: an R package for phylogenetic comparative biology (and other things). *Methods Ecol. Evol.* **3**, 217–223. (doi:10.1111/j.2041-210X.2011.00169.x)
48. Johnson GD. 1986 Scombroid phylogeny: an alternative hypothesis. *Bull. Mar. Sci.* **39**, 1–43.
49. Collette BB, Russo JL. 1985 Interrelationships of the Spanish mackerels (Pisces: Scombridae: *Scomberomorus*). *Fish. Bull.* **82**, 545–692.
50. Sanciangco M, Carpenter KE, Betancur-R R. 2016 Phylogenetic placement of enigmatic percomorph families (Teleostei: Percomorphaceae). *Mol. Phylogenet. Evol.* **94**, 565–576. (doi:10.1016/j.ympev.2015.10.006)
51. Carpenter KE, Collette BB, Russo JL. 1995 Unstable and stable classifications of scombroid fishes. *Bull. Mar. Sci.* **56**, 379–405.
52. Tucker WD. 1956 Studies on the trichiurid fishes—3. A preliminary revision of the family Trichiuridae. *Bull. Brit. Mus. Nat. Hist. Zool.* **4**, 6–131.
53. Bellotti C. 1903 Di un nuovo pteralide giapponese. *Atti della Società di Scienze Naturali e del Museo Civico di Storia Naturale in Milano* **42**, 136–139. (doi:10.5962/bhl.part.17607)
54. Mead GW. 1972 Bramidae. *Dana-Report* **81**, 1–166.
55. Regan CT. 1909 On the anatomy and classification of the scombroid fishes. *Ann. Mag. Nat. Hist.* **3**, 66–75. (doi:10.1080/00222930908692547)
56. Grey M. 1960 Description of a Western Atlantic specimen of *Scombrabolax heterolepis* Roule and notes on fishes of the family Gempylidae. *Copeia* **1960**, 210–215. (doi:10.2307/1439658)
57. Gosline WA. 1968 The suborders of perciform fishes. *Proc. U.S. Natl Mus.* **124**, 1–78. (doi:10.5479/si.00963801.124-3647.1)
58. Campbell MA, Sado T, Shinzato C, Koyanagi R, Okamoto M, Miya M. 2018 Multilocus phylogenetic analysis of the first molecular data from the rare and monotypic Amarsipidae places the family within the Pelagia and highlights limitations of existing datasets in resolving pelagian interrelationships. *Mol. Phylogenet. Evol.* **124**, 172–180. (doi:10.1016/j.ympev.2018.03.008)
59. Dartevelle E, Casier E. 1949 Les Poissons fossiles du Bas-Congo et des régions voisines. 2e partie. *Annales du Musée du Congo Belge, Tervuren (Belgique), A Ser.* **3**, 201–255. (doi:10.5962/bhl.part.4596)
60. Monsch KA, Bannikov AF. 2012 New taxonomic synopses and revision of the scombroid fishes (Scombroidei, Perciformes), including billfishes, from the Cenozoic of territories of the former USSR. *Earth Environ. Sci. Trans. R. Soc. Edinb.* **102**, 253–300. (doi:10.1017/S1755691011010085)
61. Betancur-R. R et al. 2013 The tree of life and a new classification of bony fishes. *PLOS Curr.* **5**, ecurrents.tol.53ba26640df26640cacee26675bb26165c26648c26288. (doi:10.1371/currents.tol.53ba26640df0cacee75bb165c8c26288)
62. Cavin L. 2002 Effects of the Cretaceous-Tertiary boundary event on fishes. In *Geological and biological effects of impact events* (eds E Buffetaut, C Koerber), pp. 141–158. Berlin, Germany: Springer.
63. D'Hondt S. 2005 Consequences of the Cretaceous/Palaeogene mass extinction for marine ecosystems. *Annu. Rev. Ecol. Syst.* **36**, 295–317. (doi:10.1146/annurev.ecolsys.35.021103.105715)
64. Sibert EC, Norris RD, Cuevas J, Graves L. 2016 Eighty-five million years of Pacific Ocean gyre ecosystem structure: long-term stability marked by punctuated change. *Proc. R. Soc. B* **283**, 20160189. (doi:10.1098/rspb.2016.0189)
65. Sibert EC, Norris RD. 2015 New Age of Fishes initiated by the Cretaceous-Palaeogene mass extinction. *Proc. Natl Acad. Sci. USA* **112**, 8537–8542. (doi:10.1073/pnas.1504985112)
66. Sibert EC, Friedman M, Hull P, Hunt G, Norris RD. 2018 Two pulses of morphological diversification in Pacific pelagic fishes following the Cretaceous-Palaeogene mass extinction. *Proc. R. Soc. B* **285**, 20181194. (doi:10.1098/rspb.2018.1194)
67. Griffin DC, Harrod C, Houghton JDR, Capellini I. 2019 Unravelling the macro-evolutionary ecology of fish-jellyfish associations: life in the 'gingerbread house'. *Proc. R. Soc. B* **286**, 20182325. (doi:10.1098/rspb.2018.2325)
68. Rabosky DL, Santini F, Eastman J, Smith SA, Sidlauskas B, Chang J, Alfaro ME. 2013 Rates of speciation and morphological evolution are correlated across the largest vertebrate radiation. *Nat. Commun.* **4**, 1958. (doi:10.1038/ncomms2958)
69. Rabosky DL. 2009 Ecological limits and diversification rate: alternative paradigms to explain the variation in species richness among clades and regions. *Ecol. Lett.* **12**, 735–743. (doi:10.1111/j.1461-0248.2009.01333.x)
70. Lloyd GT, Pearson PN, Young JR, Smith AB. 2012 Sampling bias and the fossil record of planktonic foraminifera on land and in the deep sea. *Paleobiology* **38**, 569–584. (doi:10.1666/11041.1)
71. Keller G, Punejar J, Mateo P. 2016 Upheavals during the Late Maastrichtian: volcanism, climate and faunal events preceding the end-Cretaceous mass extinction. *Palaeogeogr. Palaeoclimatol. Palaeoecol.* **441**, 137–151. (doi:10.1016/j.palaeo.2015.06.034)
72. Harmon JL et al. 2010 Early bursts of body size and shape are rare in comparative data. *Evolution* **64**, 2385–2396.
73. Simpson GG. 1944 *The tempo and mode of evolution*. New York, NY: Columbia University Press.
74. Bannikov AF. 1995 Morphology and phylogeny of fossil stromateoid fishes (Perciformes). *Geobios* **28**(Suppl. 2), 177–181. (doi:10.1016/S0016-6995(95)80109-X)
75. Liem K. 1978 Modulatory multiplicity in the functional repertoire of the feeding mechanism in cichlid fishes. *J. Morphol.* **158**, 323–360. (doi:10.1002/jmor.1051580305)
76. Pepin P, Koslow JA, Pearre Jr S. 1988 Laboratory study of foraging by Atlantic mackerel, *Scomber scombrus*, on natural zooplankton lineages. *Can. J. Fish. Aquat. Sci.* **45**, 879–887. (doi:10.1139/f88-106)
77. Poiter M, Marsac F, Chérel Y, Lucas V, Sabatie R, Maury O, Menard F. 2007 Forage fauna in the diet of three large pelagic fishes (lancetfish, swordfish and yellowfin tuna) in the western equatorial Indian Ocean. *Fish Fish.* **83**, 60–72. (doi:10.1016/j.fishres.2006.08.020)
78. Mansueti R. 1963 Symbiotic behavior between small fishes and jellyfishes, with new data on that between the stromateoid, *Peprilus alepidotus*, and the scyphomedusa, *Chrysaora quinquecirrha*. *Copeia* **1963**, 40–80. (doi:10.2307/1441273)
79. Arai MN. 1988 Interactions of fish and pelagic coelenterates. *Can. J. Zool.* **66**, 1913–1927. (doi:10.1139/z88-280)
80. Janssen J, Harbison GR. 1981 Fish in salps: the association of squaretails (*Tetragonus* spp.) with pelagic tunicates. *J. Mar. Biolog. Assoc. U.K.* **61**, 917–927. (doi:10.1017/S0025315400023055)
81. López-Fernández H, Arbour JH, Winemiller K, Honeycutt RL. 2013 Testing for ancient adaptive radiations in Neotropical cichlid fishes. *Evolution* **65**, 1321–1337. (doi:10.1111/evo.12038)
82. Turner GF, Seehausen O, Knight ME, Allender CJ, Robinson RL. 2001 How many species of cichlid fishes are there in African lakes? *Mol. Ecol.* **10**, 793–806. (doi:10.1046/j.1365-294x.2001.01200.x)
83. Theisen TC, Bowen BW, Lanier W, Baldwin JW. 2008 High connectivity on a global scale in the pelagic wahoo, *Acanthocybium solandri* (tuna family Scombridae). *Mol. Ecol.* **17**, 4233–4247. (doi:10.1111/j.1365-294x.2008.03913.x)
84. Rabosky DL. 2019 Phylogenies and diversification rates: variance cannot be ignored. *Syst. Biol.* **68**, 538–550. (doi:10.1093/sysbio/syy079)
85. Olney JE, Johnson GD, Baldwin CC. 1993 Phylogeny of lampridiform fishes. *Bull. Mar. Sci.* **52**, 137–169.
86. Johnson GD, Paxton JR, Sutton TT, Satoh TP, Sado T, Nishida M, Miya M. 2009 Deep-sea mystery solved: astonishing larval transformations and extreme sexual dimorphism unite three fish families. *Biol. Lett.* **5**, 235–239. (doi:10.1098/rsbl.2008.0722)
87. Davis MP, Holcroft NI, Wiley EO, Sparks JS, Smith WL. 2014 Species-specific bioluminescence facilitates speciation in the deep sea. *Mar. Biol.* **161**, 1139–1148. (doi:10.1007/s00227-014-2406-x)
88. Cowman PF, Bellwood DR. 2011 Coral reefs as drivers of cladogenesis: expanding coral reefs, cryptic extinction events, and the development of biodiversity hotspots. *J. Evol. Biol.* **24**, 2543–2562. (doi:10.1111/j.1420-9101.2011.02391.x)